

# **Zerbrochene Schalen 2**

## **- Vertrauen**

für Klarinette, Viola und Klavier

Andreas Weixler  
1998

# Legende

## Klarinette und Viola



Ton ein Viertelton erhöht

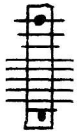


Ton ein Viertelton erniedrigt



ad. lib innerhalb der Tonauswahl      Improvisation liegender Töne und Glissandi

## Klavier



weißer Cluster



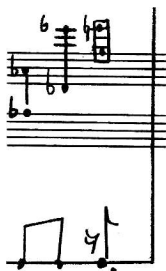
schwarzer Cluster



chromatischer Cluster



Flageolett mit Angabe des Teiltones



Rhythmus für Clusterbewegung

♩ = 60

**A**

① "hh" einatmen

"hh" ausatmen

slap Glass

cl trans

vla

pno

sfz

mf

f

sfz

mf

f

sfz

mf

f

sp. m.t Druck

Glass

ped

8va bassa

④

cl trans

vla

pno

tacet

tacet

tacet

ped

8va bassa

\*

5

cl trans

*p* *Gliss*

*mp*

Improvisation liegender Töne und Glissandi  
Auf Schwebung hören

vla

*p* *Gliss*

*mp*

Improvisation liegender Töne und Glissandi  
Auf Schwebung hören

pno

*f* *Flag 5*

*ped* \*

8

cl trans

*cresc. poco a poco*

vla

*cresc. poco a poco*

pno

*Flag 5*

*ped* \*

*ped* \*

**B** ⑨ "ha" Klappengeräusch

cl trans

mf

5 5

"ha" auf Holz klappen

mf

sp. mit Druck → S.T.

Gliss

f

vib.

mf

p

"ha" mit Faust auf Holz

mf

f

L ped

mf

f

Ev. basial

#

\*

**C** ⑫

cl trans

pp

mp

mp

vib.

mp

3

mp

pno

mf

mp

pp

mp

3

mp

3

cresc.

cl trans

vla

pno

*p*

*mp*

*cresc poco a poco*



cl trans

vla

pno

*tacet*

*mf*

23

D

25

cl trans

vla

pno

3

3

3

Flag

mf ped



26

29

cl trans

vla

pno

p

mp

p

Gliss

Gliss

3

3

\*

5

30 33

cl trans

mp

via

Gliss

mp

pno

P

mp

34 36

cl trans

cresc. poco a poco

via

cresc. poco a poco

pno

cresc. poco a poco



37

**E**

40

cl  
trans

Musical notation for Clarinet Transposing (cl trans) in treble clef. It features a melodic line with slurs, accents, and a triplet of eighth notes in the second measure. The key signature has one sharp (F#).

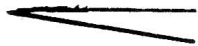
*cresc.*

3

"hh"  
ausatmen

vla

Musical notation for Viola (vla) in alto clef. It features a melodic line with slurs, accents, and a triplet of eighth notes in the first measure. The key signature has one sharp (F#).



6

"hh"  
ausatmen

pno

Musical notation for Piano (pno) in grand staff (treble and bass clefs). It features a complex accompaniment with slurs, accents, and a triplet of eighth notes in the bass line of the second measure. The key signature has one sharp (F#).

*cresc.*

3

"hh"  
ausatmen

Flog.

*p* ped \*